

# 100amp 200amp 400amp Residential Overhead Service

CONSTRUCTION HOTLINE

1.866.992.6619

## METER ENCLOSURES:

1. Selected from the List of Approved devices as shown in the Ameren Missouri Electric Service Manual found at [Ameren.com/ServiceManual](http://Ameren.com/ServiceManual).
2. 100amp, 200amp, or 400amp enclosures to be U.L. approved and equipped with Safety Lever Bypass. No Ring style meter bases allowed.
3. All unused knockouts in meter enclosure and fused disconnect must be plugged with standardized plugs.
4. Fused or breaker disconnect with cover plate is required below meter enclosure if electrical panel is more than 10' away in most cases. (Must check with local inspection authority for requirement.)
5. Meter enclosures shall not be attached with non-ferrous screws or drywall screws.
6. Meter enclosure shall be installed between 3' and 5 1/2' measured from final grade to center of glass. If enclosure is mounted along a driveway/parking lot or an abutting sidewalk 36" or less, mount at 6 1/2' center of glass.
7. Meter enclosure to be mounted between the midpoint of the permanent building/home and the corner closest to Ameren Missouri source facilities with fused disconnect in the 'OFF' position. All meter enclosure locations to be approved by Ameren Missouri.
8. NOTE: To qualify for a Residential rate, the residence must have one or more rooms used for eating, sleeping, and permanent provisions for cooking and sanitation.

## MAST:

1. Pipe support clamps must be galvanized heavy duty malleable iron or heavy gauge steel and attached securely to wall.
2. House knob attachments are provided and installed by customer, required by Ameren, and must be secured to building at approved locations.
3. Mast clamps are provided and installed by customer. No more than 30 inches apart within 6" of weatherhead.
4. Rigid metal conduit must be continuous from service head to the meter enclosure. Splices are not permitted. Gray Schedule 40 conduit is permitted if weatherhead is under soffit and service wire is attached to house knob.
5. Service cable clearances required at lowest sag points:  
[ 12' @ yards ] [ 16 1/2' @ driveways ] [ 18' @ Roadways ]
6. The roof support plate provides the main means of support for the mast. It shall be securely lagged to roof rafters.
7. 18" minimum from roof line to service attachment on mast permitted, providing voltage between conductors does not exceed 600 volts and service wires do not pass over more than 4 feet of the roof and is terminated at a service mast.
8. **Acceptable** points of house knob attachment: Outside trim board that is reinforced, inside trim board that is reinforced, soffit board that is reinforced, building studs, and mortar joints.
9. **Unacceptable** points of house knob attachment: Outside trim board, inside trim board of brick buildings, soffit or fascia board, fire walls, parapet walls, or chimneys.

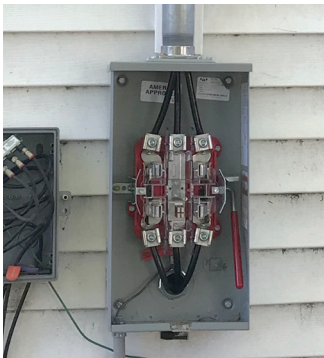
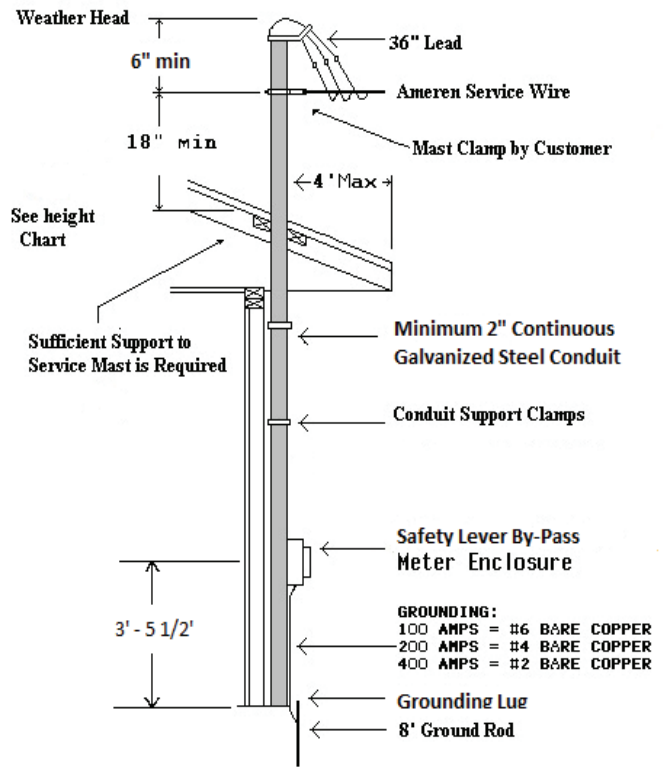
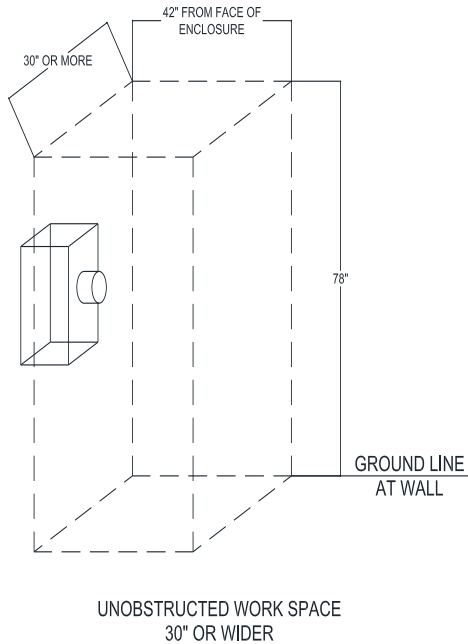
## GROUNDING:

1. National Electric Code approved grounding required. For 100amp service, bond enclosure with #6 bare copper. For 200amp service, bond enclosure with #4 bare copper. For 400amp service, bond enclosure with #2 bare copper.
2. Ground wire between meter enclosure ground lug and ground rod shall be continuous with no splices.

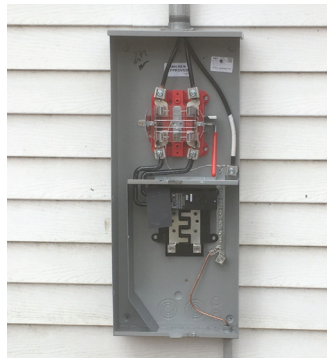
NEC Minimum Required Wire Size		
Amps	Copper	Aluminum
100	2	1/0
200	2/0	4/0
400	350 mcm	500 mcm

**NOTE: Contact local inspection authority for their requirements**

Maximum Attachment Height on Mast		
Ameren Cable Size	Steel Conduit Size	Maximum Height
2	2"	2' 4"
2	2 1/2"	5' 2"
1/0	2"	2' 2"
1/0	2 1/2"	4' 1"
4/0	2 1/2"	3' 2"
4/0	3"	4'



200 Amp Safety Lever By-Pass



200 Amp With Breaker Safety Lever By-Pass



400 Amp With Breaker Safety Lever By-Pass



400 Amp Safety Lever By-Pass