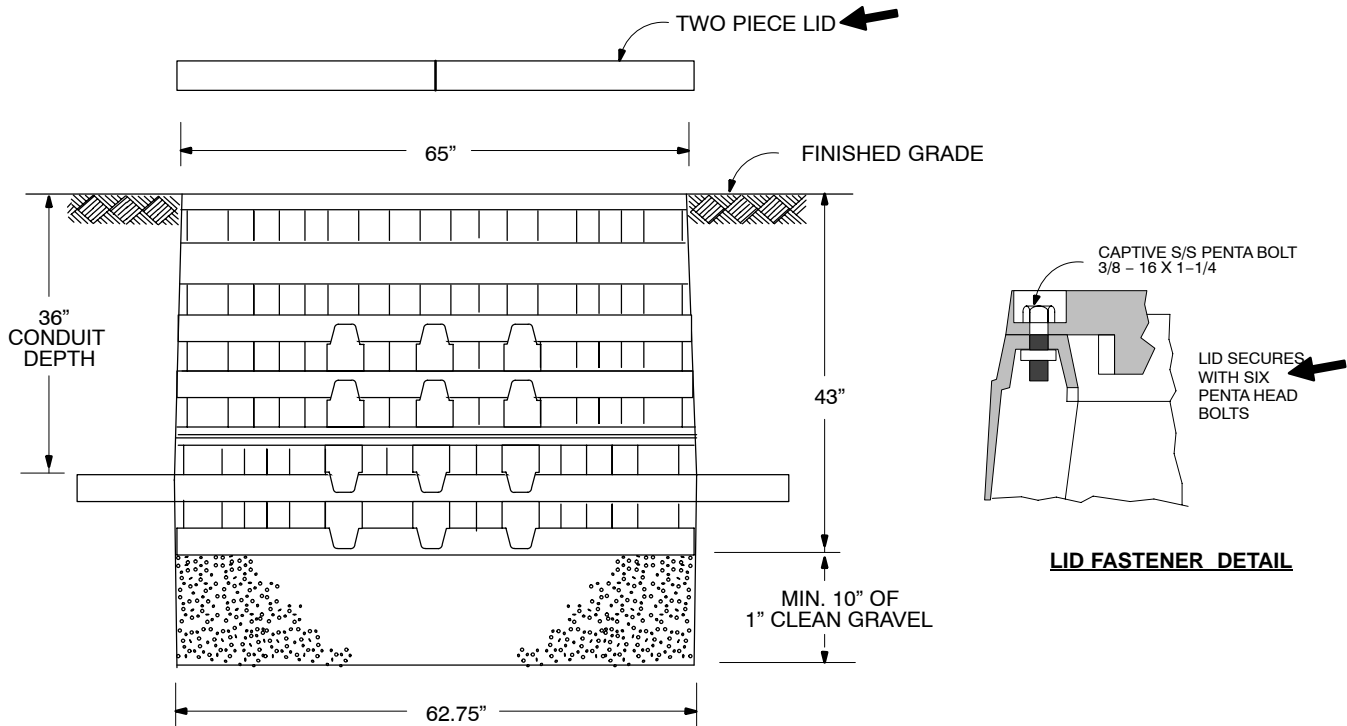


**UNDERGROUND STRUCTURES**  
 Vault – High Density Polyethylene 3' x 5' – 42" Deep  
 2 – 4" Couplings Each End

"This vault does not have a traffic rating."



**Instructions :**

1. Locate this vault out of the way of vehicular traffic.
2. Excavate and install vault at standard conduit depths on 10" base of 1" gravel.
3. Fill any overdig with crushed rock levelling the rock and tamping firm.
4. Install conduits in couplings or drill holes in desired conduit locations.
5. FILL & TAMP – Replace and stabilize the earth around the vault tamping to compaction.
6. Sod or resurface grade as necessary.

**MATERIAL INSTALLED BY CONTRACTOR**

( DERIVED FROM CONSTRUCTION STANDARD 32 24 03 \*\* )

Std. / Stk. No.	Description	Unit	Quan.	Weight
12 06 122	Vault – Poly 3' x 5'	Ea.	1	285 lbs.
	Rock – Crushed	Cy	1	