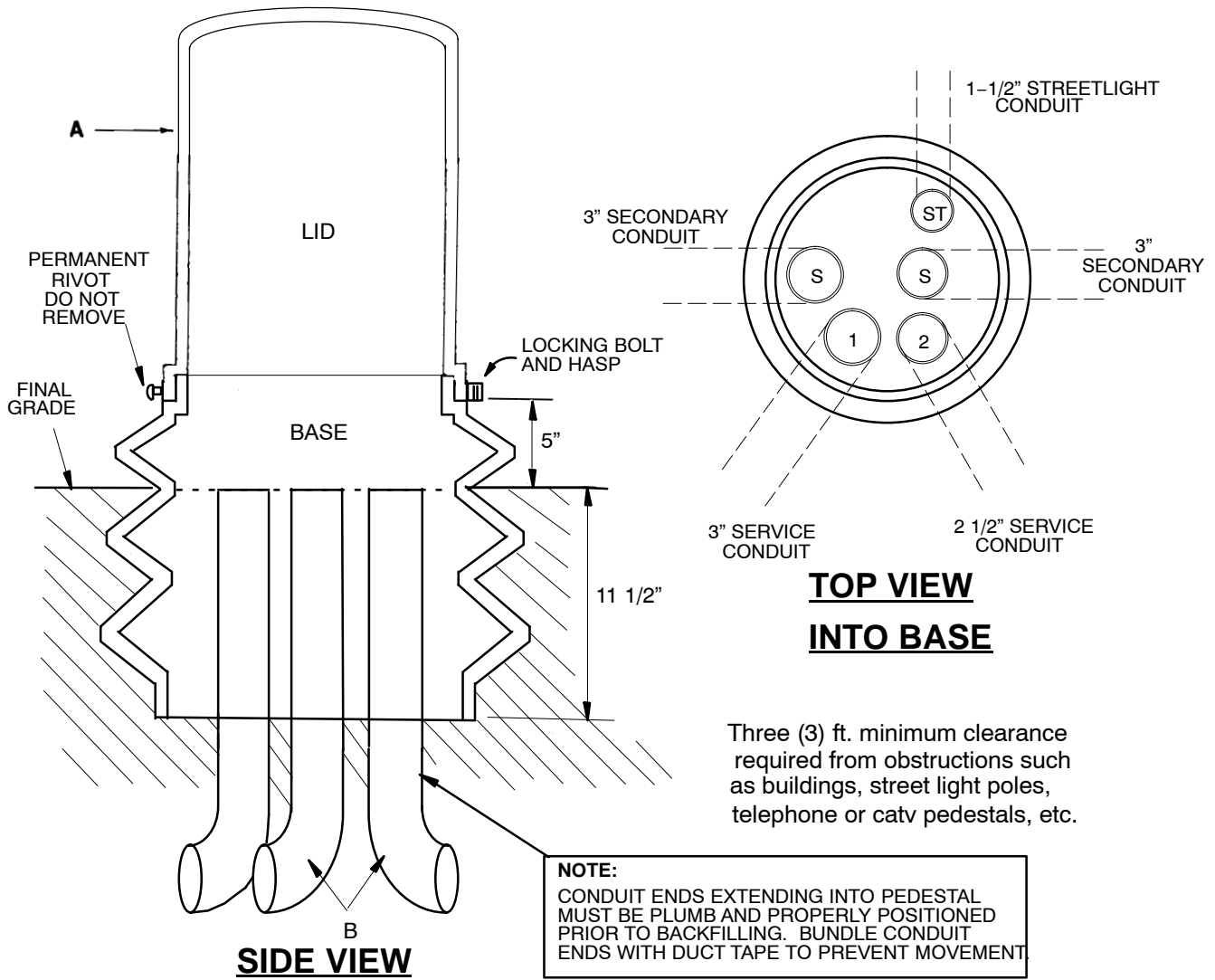


UNDERGROUND EQUIPMENT
Secondary Power Pedestal
Above Grade – Polyethylene

SPEC 9
 Sheet 1 of 2



NOTES:

1. See Spec 10 for installations of service conduit.
2. All conduits shall be cut off level at final grade.
3. Conduit ends shall be sealed with duct tape and tape marked with permanent marker as follows: S= secondary, ST = Streetlight, and service conduits marked with lot number.
4. Temporary hole to face away from street.
5. Lid is secured with a 3/8" Penta head bolt. To open: loosen pentabolt, turn hasp out of slot, and twist lid.
6. Proper compaction of backfill is important to prevent settling. Backfilling with limestone screenings is recommended.

UNDERGROUND EQUIPMENT
Secondary Power Pedestal
Above Grade – Polyethylene

SPEC 9
Sheet 2 of 2

MATERIAL INSTALLED BY CONTRACTOR

(DERIVED FROM CONSTRUCTION STANDARD 52 11 01 **)

	Stk. No.	Description	Qty.
A	12 05 049	Pedestal – Above Ground, Polyethylene	1
B	12 51 331	Bend–Plastic, 1–1/2", 24" Rad. (Streetlight)	As Req'd
	12 51 173	Bend–Plastic, 3", 36" Rad. (Secondary & 400 A Service)	As Req'd
	12 51 264	Bend–Plastic, 2 1/2", 24" Rad. (200 A Service)	As Req'd