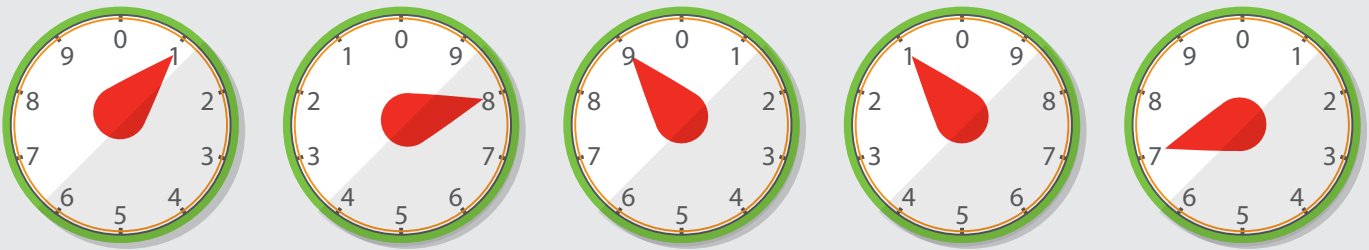


HOW TO READ YOUR ELECTRIC OR GAS METER

ELECTRIC

You can read your electric meter using the method detailed below.

1. Write down the figures in left to right order. Record the number that the pointer has just passed – that is, the lower number. NOTE: “0” is considered higher than “9” but lower than “1”.
2. For example, the dials shown below read **1-8-9-1-7** kWh. From your present reading, subtract the last reading, as shown on your last statement. The result will be the number of kWh used during the period.
3. Once you record your reading, subtract last month’s reading and multiply the difference by your energy charge. Your results will not show exactly the same usage as the amount recorded on your statement. However, it will be a close approximation for checking the general accuracy of your statement.



GAS

Natural gas use is measured in cubic feet and is billed in units of 100 cubic feet (Ccf). Each unit of measure shown by the right-hand dial is 100 cubic feet, or 1 Ccf.

You can read your gas meter and check your statement using the methods listed for reading an electric meter above.