

# Illinois Valley Reliability Project

June 2025

## Improving energy reliability in your community

Ameren Transmission is proposing the Illinois Valley Reliability Project to improve energy reliability for communities in Bureau and LaSalle counties. The Project includes constructing a new, approximately 23-mile, 138-kilovolt transmission line, upgrading the existing Princeton substation, and building a new switching station called Lima located near Peru. The new transmission line will connect the Princeton substation to the new Lima switching station.

The Illinois Valley Reliability Project will improve energy reliability and resiliency for local homes and businesses, upgrade existing infrastructure, and support long-term economic growth in the region. Our goal is to have the Project in service and providing benefits to local communities in late 2029.

## Project Benefits



The Illinois Valley Reliability Project will benefit the local area by:

- Improving energy reliability and resiliency for local homes and businesses
- Upgrading existing infrastructure and building a new switching station
- Supporting long-term economic growth in LaSalle and Bureau counties

## Anticipated Schedule

### 2025

- Gather public and agency input
- Route siting studies
- Final routes identified

### 2026

- File routes with ICC
- Certificate of Public Convenience & Necessity (CPCN) decision
- Easement acquisition

### 2027

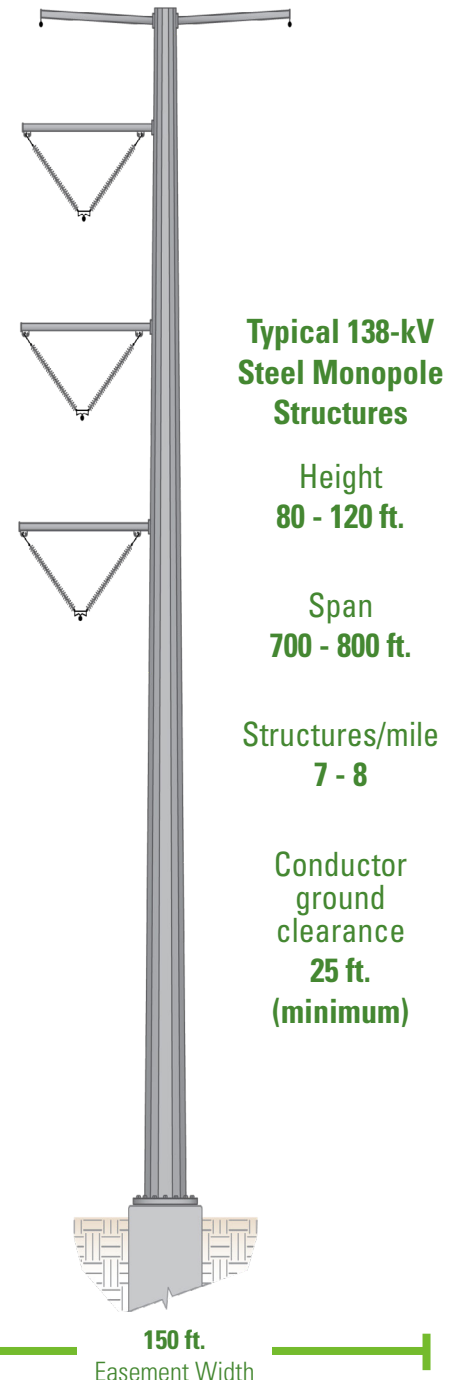
- Environmental surveys and permitting
- Easement acquisition
- Lima switching station completion

### 2028

- Environmental surveys and permitting
- Line construction

### 2029

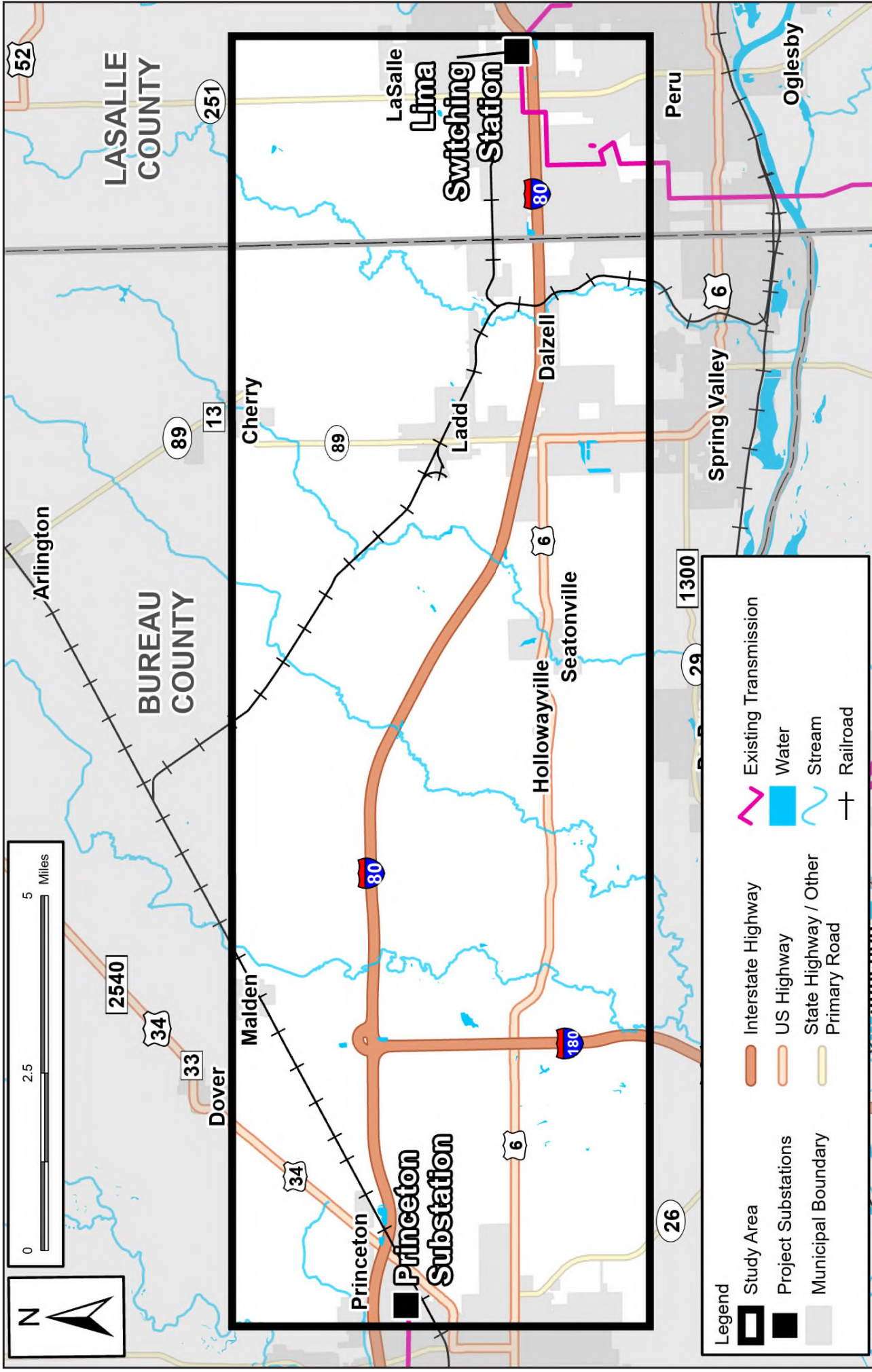
- Line construction
- Princeton substation completion
- Project in service
- Restoration



At this time, we anticipate using steel monopole structures. Typical information about these types of structures is provided above. Note: This graphic is not to scale, and the number of arms on a typical structure may vary depending on the final route.

\*Pole structure will be designed with the potential of a future 345-kV circuit.

# Study Area Map



The Illinois Valley Reliability Project will improve energy reliability and resiliency for local homes and businesses, upgrade existing infrastructure, and support long-term economic growth in the region.



[Ameren.com/IllinoisValley](https://www.illinoisvalley.com) (coming soon)



833.478.7733



[IllinoisValleyReliability@Ameren.com](mailto:IllinoisValleyReliability@Ameren.com)